

PLANNING INSIGHT

A Newsletter of the Bucks County Planning Commission



GRANTS INSIGHT

The Department of Community Economic Development (DCED) offers the **Multimodal Transportation Fund** that may be used for the development, rehabilitation and enhancement of transportation assets to existing communities, streetscape, lighting, sidewalk enhancement, pedestrian safety, connectivity of transportation assets, and transit-oriented development.

Application deadline: July 31, 2021.
More information: dced.pa.gov/programs/multimodal-transportation-fund/

The **National Trust Preservation Fund** encourages historic preservation at the local level by providing seed money for preservation projects. Grants are awarded annually in three rounds, February 1st, June 1st, and October 1st. More information: savingplaces.org/grants#.YlhQPB-SmUI

PennDOT's **Transportation Alternatives Set-Aside Program** funding round is expected to open in **July 2021**. Eligible projects include bicycle or pedestrian facilities, conversion of abandoned railway corridors to trails, overlooks and viewing areas, historic preservation and rehab of historic transportation facilities, vegetation management, and wildlife mortality mitigation projects. Program guidance and more information will be available in the upcoming weeks.

More information: www.dvrpc.org/tap/pa

BUCKS TRIVIA

How many resources in Bucks County are listed on the National Register of Historic Places?

FROM THE DIRECTOR'S DESK



This edition of the newsletter is dedicated to a look back, as well as a look ahead. Looking back, staff has released another offering to our Maps and Data Portal which chronicles our historic resources throughout Bucks County. Our county's National Register of Historic Places are vividly presented in a web map with color photographs and matching interactive locations to tell the story of our resource preservation efforts.

Looking ahead, the County's comprehensive plan requires a fresh look and an update to ensure that we are positioned for growth and sustainability moving forward. *Bucks2040* will encompass our efforts and will serve as the basis upon which we develop an implementable plan for preserving, sustaining, and moving

Bucks County forward. Each and every municipality and every resident will have the ability to provide input into the plan. Our efforts will start with the release of the *Bucks2040* Resident Survey, as well as the *Bucks2040* Business Survey. We ask that you save the date, June 15, 2021, when we will conduct two webinar meetings to engage with our municipal elected officials and managers. We encourage you to share the *Bucks2040* link with your residents and on your own websites to stay updated on our progress.

As always, my door is open, and I may be reached via email (estone@buckscounty.org) or phone (215.345.3401). I look forward to hearing from you and welcome your feedback.

Enjoy *Planning InSight!*

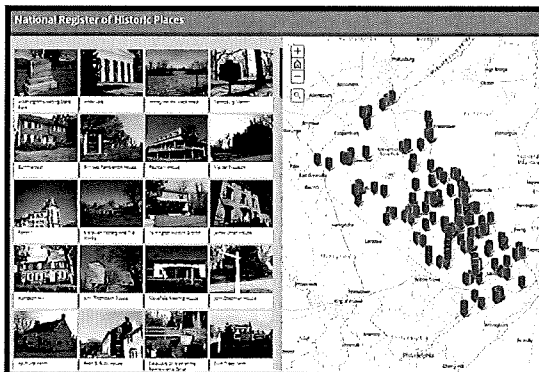
NATIONAL REGISTER OF HISTORIC PLACES

The National Register of Historic Places is the official list of the nation's historic resources worthy of preservation. The register was established by the National Historic Preservation Act of 1966 and is maintained by the National Park Service.

The National Register recognizes resources that are significant at the local, state, or national level. This includes buildings, structures, objects, and sites that have connections to historic events or patterns of development; are

associated with historically significant persons; important for architecture, construction, or engineering; or significant for archaeology. Generally, a historic resource needs to be at least 50 years old, and should currently look similar to when it was first constructed.

Nominations for listings are administered through the Pennsylvania Historical and Museum Commission (PHMC), the official history agency of the Commonwealth of Pennsylvania.



Staff recently developed a web map to display the resources on the National Register that are located throughout Bucks County. The web map can be viewed here: bucksgis.maps.arcgis.com/apps/Shortlist/index.html?appid=275251469e9843f291a4c018476e0a20

Be sure to check out the other interactive tools, documents, and grant opportunities on the historic and cultural webpage, which can be found on the Bucks County Data Portal: historic-cultural-resources-bucksgis.hub.arcgis.com/

BUCKS 2040 COMPREHENSIVE PLAN UPDATE

The Bucks County Planning Commission is beginning a new county comprehensive plan, "Bucks2040." This update to the 2011 comprehensive plan will form a collective vision for Bucks County and set a direction for future Bucks County policies and programs. *Bucks 2040* will focus on the quality-of-life issues that are most important to Bucks County residents and how planning can help our communities achieve better land use outcomes.

With this plan, we hope to help our boroughs and township:

- Make good land use decisions for better development outcomes
- Make homeownership more attainable for Bucks County families
- Improve our roads and give residents more options in getting where they need to go
- Keep our air clean and help fight climate change
- Give residents more economic and educational opportunities
- Keep our communities safe and healthy
- Preserve the county's natural, historic, cultural, and agricultural legacy

Public Outreach and Plan Vision

In the coming months, a random sampling of Bucks County households will receive the *Bucks2040* survey. This survey will help us understand what our residents like about Bucks County, what they would like to see improved, what they value most in terms of quality of life, and what most concerns them about the future.

We will also be conducting meetings with municipal officials and open houses to get direct feedback from the public and discuss ways of improving our communities.

These meetings, along with our survey results, will help identify outstanding issues and form the vision for the plan.

Analysis of Conditions and Trends

BCPC staff will evaluate current conditions and trends that are important to the future of Bucks

County. In this part of the plan, we hope to answer questions such as:

- How are we growing and where?
- Where is housing most and least attainable?
- How successful have our farmland and open space preservation programs been?
- Where are our critical remaining natural resources located?
- Where do we need to focus our transportation and other infrastructure upgrades?

An evaluation of these trends will be important in making sure future initiatives address the county's most critical needs.

Guidance

We will also meet with local officials and community and business leaders to get feedback on potential planning practices and policies that will be most effective in attaining the plan's vision.

The plan will be organized by themes and a unified vision for the plan will be developed. The plan's recommended policies and guidance for our communities will reflect the goals and values inherent in the plan's vision.

An implementation document will be developed to provide local policy guidance to our municipalities in addressing residents' most pressing issues and future challenges.

The future success of *Bucks2040* relies on Bucks County residents and municipalities, the County of Bucks and its departments, and the Bucks County Planning Commission coming together to plan for a better future. We are very excited to be a part of this!

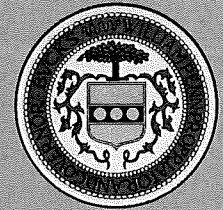
For more information on the plan, updates on the plan's progress, and how you can give your opinion on the future of Bucks County, go to **Bucks2040.com**.



Planning Commission Board

- Tom Tosti, *Chairman*
- Richard Donovan, *Vice Chairman*
- Thomas J. Jennings, Esq., *Secretary*
- Craig E. Bryson, P.L.A.
- James J. Keenan
- David R. Nyman
- Carol A. Pierce
- Edward J. Tokmajian
- Walter S. Wydro

Evan J. Stone,
Executive Director



Bucks County Commissioners

- Diane M. Ellis-Marseglia, LCSW, *Chair*
- Robert J. Harvie Jr., *Vice Chair*
- Gene DiGirolamo

www.buckscounty.org

www.buckscounty.org/PC

www.dataportal-bucksgis.opendata.arcgis.com

Bucks County Planning Commission

1260 Almshouse Road
Doylestown, PA 18901
P: 215-345-3400
F: 215-345-3886

bcpc@buckscounty.org

Trivia Answer:

1163

